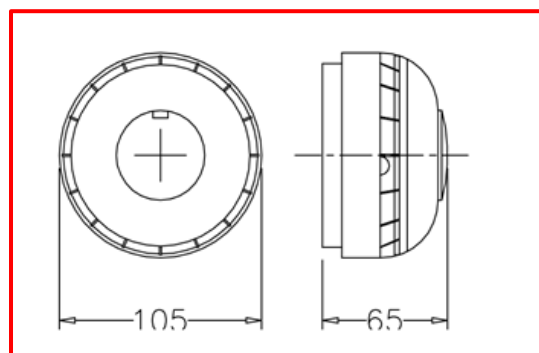


HEAT & SMOKE DETECTOR

For use with EMC-3C



COMBINED
 Heat and Smoke Detector with
 Integral Sounder



FEATURES

- 3 Adjustable Temperature Settings
- Variable Sound Output
- LED Indication
- 3 Adjustable Settings for Smoke Density
- Selectable Response

SPECIFICATIONS

TEMPERATURE SETTINGS	Heat Setting 1: 58°C Rate of Rise Heat Setting 2: 58°C Fixed Heat Setting 3: 90° Fixed Sounds 2 & 3 can alternatively be provided with an "Alternating Tone" (800-970Hz) or "Sweep Up Tone" (800-970Hz) respectively.
NORMAL OPERATION	LED flashes every 20 seconds
ALARM	LED is continually illuminated until reset
DIMENSIONS	65mm x 105mm

(The Company reserves the right to amend product specifications and information without notice.)

PLEASE CONTACT OUR SALES TEAM for further information.

PART OF THE MARANTEC COMPANY GROUP - OPENING DOORS IN SOUTHERN AFRICA

PROUD SUPPORTERS AND SUPPLIERS OF:

